

Total No. of Questions—8]

[Total No. of Printed Pages—3

Seat No.	
-------------	--

[5252]-107

S.E. (Civil) (Second Semester) EXAMINATION, 2017
ARCHITECTURAL PLANNING AND DESIGN OF BUILDINGS
(2012 PATTERN)

Time : Two Hours

Maximum Marks : 50

- N.B. :—** (i) Solve Q. No. 1 or Q. No. 2, Q. No. 3 or Q. No. 4, on answer-book.
- (ii) Solve Q. No. 5 or Q. No. 6, Q. No. 7 or Q. No. 8 on drawing sheet.
- (iii) Assume suitable data if necessary.
- (iv) Figures to the right indicate full marks.

1. (a) Write a note on 7/12 abstract, elaborating the importance and meaning of every term on it. [7]
- (b) Write notes on : [6]
- (i) Circulation and
- (ii) Contrast.

Or

2. (a) Explain the utility of 6-D forms. [6]
- (b) What is "fire load" ? Explain the means for "fire protection" in brief. [7]
3. (a) Explain one pipe and two pipe plumbing system with sketch. [6]
- (b) What is "F.A.R." ? Mention about the areas to be exempted while calculating F.A.R. [6]

P.T.O.

Or

4. (a) What factors affect, designing and planning of electrical services ? [6]
- (b) Enlist the objectives of Framing "D.C. Rules". [6]
5. Draw the developed plan for a line plan given (Refer. Fig. 1). External and internal wall thickness = 150 mm. Find max. horizontal and max. vertical dimension. [10+3=13]

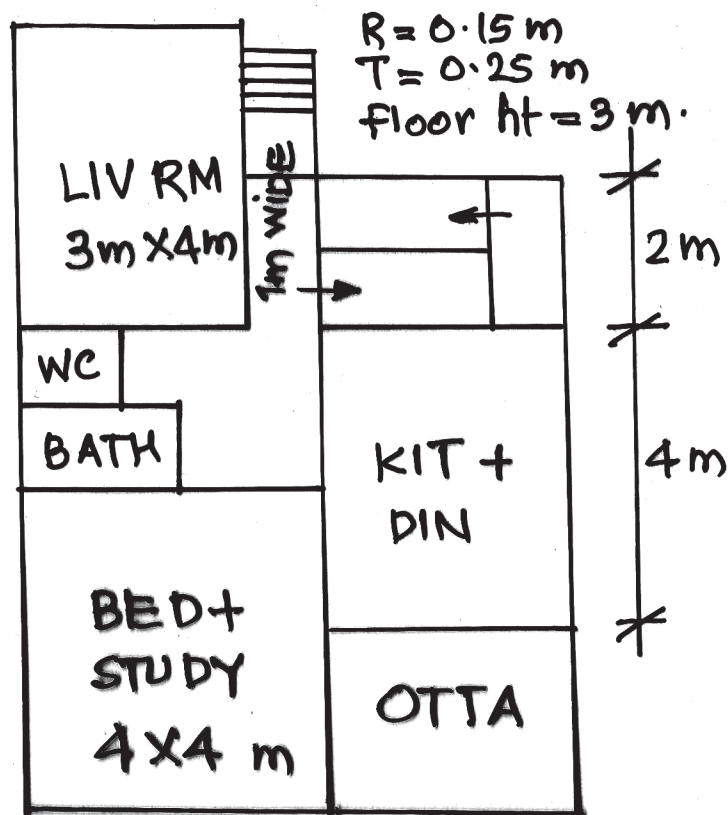


Fig. 1

Or

6. Draw line plans for a G+1 storeyed bungalow with the following details. Also indicate clearly locations of doors, windows and ventilators (if any) with its schedule :

Ground floor :

Living room = 18 m², kit and Din = 15 m², Master bed with attached toilet 18 m², with provision of W.C./Bath, staircase

First Floor :

Common room — 18 m², Bedroom —18 m² and WC/Bath + Terrace.

[5+5+3=13]

7. Draw a line plan for a post office with the following data : [12]

- (i) Counters — width — 0.7 m; 6 in no.
- (ii) Working area for staff — 40 m²
- (iii) Post Master's room with toilet — 18 m²
- (iv) Separation room — 40 m²
- (v) Cash transaction + Safe custody area — 40 m²
- (vi) W.C. — Male/Female — 9 m² each.

Or

8. Draw a line plan for a hostel building with the following details : [12]

- (i) Entrance + Moving space around — 2.5 m wide.
- (ii) Two seated rooms — 7.5 m²/seat
- (iii) Recreation Hall and dining hall. — 3 m²/seat for both.
- (iv) Kitchen/Store — min. width 3 m.
- (v) Sanitary block, parking space, other facilities — as per requirements;

[for 50 students—]